



Ashley Community Scho



104 New Street
P.O. Box 6
Ashley, MI 48806

Telephone: (989) 847-4000
Fax: (989) 847-3500

"Learning is for a Lifetime"

Tim Hughes, Superintendent
Tom Saylor, Principal

From the Superintendent's Desk...

Dear Parents and District Residents:

Public Act 25 requires all school districts to annually report on the various aspects of their school programs to the public. On the following pages is a "report card" on Ashley Community Schools for the 2008-2009 school year.

Overall, we have enjoyed a very successful year at Ashley Community Schools. Student achievement remains our first priority and test scores at all levels have continued to improve. In addition, student enrollment numbers improved in the fall of 2008 and remained steady through the end of the 08-09 school year. Early projections for fall 2009 enrollment appear to continue the positive trend of increased students at 379.

The Ashley Board of Education, Administration, Faculty and Staff appreciate your continued support. Our students enjoy the benefits of excellent facilities and a superior programming due to your ongoing care and consideration. Our pledge to you is that we will provide all of our students with the best education possible.

Sincerely,

Mr. Tim Hughes

Ashley Schools Superintendent

At Ashley Community Schools We Believe . . .

that all students can, and want to learn and that our mission is to guarantee an atmosphere for the discovery of individual potential and to promote the development of positive self-image. In doing that, students will attain the knowledge and develop the skills and attitudes to adapt successfully in an ever-changing World.

2008-09 Members

Ashley Community Schools Board of Education

Anmarie Andrews	President
Ron Koppleberger	Vice President
Cindy Wilson	Secretary
Melissa Payne	Treasurer
Allen Burk	Trustee
Annette O'Dell	Trustee
Patrick Wilk	Trustee

Citizen Participation:

Communication between the Board of Education and district residents is always encouraged and members of the community have the opportunity to participate at all public board meetings. A special time is provided at the beginning of each Board of Education meeting for citizens to address the Board. If unable to attend, questions or concerns may be expressed in writing to the Board Secretary or the Superintendent. Please include all essential information.

If You Have Special Concerns:

Many times individual concerns or problems are best dealt with by beginning at the source and proceeding through proper channels. If the matter is not resolved at these levels, the Superintendent will be glad to make arrangements to meet with concerned parents, citizens, or groups. The following list of phone numbers should assist you in addressing a concern.

Phone Numbers:

Superintendent's Office	989-847-4000	Mr. Tim Hughes
High School Office	989-847-2514	Mr. Tommie Saylor, Jr.
Elementary School Office	989-847-2102	Mr. Tommie Saylor, Jr.
Maintenance/Custodial	989-620-1405	Mr. Gerald Wallen
Transportation	989-620-1405	Mr. Gerald Wallen
Athletics	989-847-2514	Mr. Joe Holloway
Technology	989-847-2514	Mr. Will Hacker
Ashley District Library	989-847-4283	Mrs. Ruth Steffen

Employee Groups: 2008-09	
Class	No. Employees
Administrators	2.0
Teachers	24.0
Secretaries	3.6
Aides	7.4
Maintenance/Custodial	4.0
Transportation	5.0
Food Service	3.0
Total Staff	49.0

Enrollment History –September Count	
School Year	September Count
2009-10	379
2008-09	378
2007-08	398
2006-07	397
2005-06	394

General Fund Budget Summary		
*Revenues	2007-08	\$3,145,881
*Expenditures	2007-08	\$3,076,158
Revenues over (under) Expenditures		\$ 69,723
Fund Balance – July 1, 2007		\$114,887
Projected Fund Balance – June 30, 2008		\$184,610

**Preliminary audit figures*

Non-Discrimination Policy

It is the policy of Ashley Community Schools that no person shall, on the basis of race, color, national origin, sex, or disability, be excluded from participation in, be denied the benefits of, or be subjected to discrimination under any program or activity in employment.

ASHLEY ELEMENTARY SCHOOL

Principal Tommie D. Saylor, Jr.

MISSION STATEMENT

Ashley Elementary School, in conjunction with the parents and community, will strive to provide an environment in which our students will be able to attain their full potential and become productive, caring citizens in an ever-changing world.

ELEMENTARY MEAP TESTING

When examining *Michigan Educational Assessment Program (MEAP)* scores it is important to remember that scores are for a particular grade of students for the year in question and that the next year's scores are generated from a different group of students that are now in that grade. *MEAP* scores should be examined by looking for trends, that is, are the scores going up, are they remaining stationary, or are they going down over a period of time (years). These trends indicate whether or not our school improvement practices are appropriate or if other techniques and teaching methods are indicated.

Ashley elementary is a targeted assistance *Title I* school. Approximately \$100,000 of federal assistance is spent annually to *target* those students most in need of additional help to achieve academically. Much of this amount pays for salaries and benefits for para-professional aides who work with identified *Title I* eligible students to help them achieve.

Elementary School MEAP Results						
Grade 3 - English Language Arts	2008-2009	%M	2007-2008	2006-2007	2005-2006	2004-2005
Level 1	18.2	Ashley	25.0	15.4	16.7	
Level 2	81.8	100.0	60.7	84.6	75.0	
Level 3	0.0	State Ave.	14.3	0.0	8.3	
Level 4	0.0	83	0.0	0.0	0.0	
Grade 3 Mathematics	2008-2009	%M	2007-2008	2006-2007	2005-2006	2004-2005
Level 1	86.4	Ashley	57.1	69.2	66.7	
Level 2	13.6	100.0	42.9	30.8	33.3	
Level 3	0.0	State Ave.	0.0	0.0	0.0	
Level 4	0.0	91	0.0	0.0	0.0	
Grade 4 - English Language Arts	2008-2009	%M	2007-2008	2006-2007	2005-2006	2004-2005
Level 1	0.0	Ashley	7.7	0.0	4.2	
Level 2	61.5	61.5	76.9	90.5	66.7	
Level 3	34.6	State Ave.	15.4	9.5	25.0	
Level 4	3.9	77	0.0	0.0	4.2	
Grade 4 - Mathematics	2008-2009	%M	2007-2008	2006-2007	2005-2006	2004-2005
Level 1	32.0	Ashley	26.9	52.4	45.8	40.8
Level 2	68.0	100.0	69.2	47.6	41.7	33.3
Level 3	0.0	State Ave.	3.9	0.0	12.5	25.9
Level 4	0.0	88	0.0	0.0	0.0	0.0
%M = Percentage of students that either met or exceeded standards (Level 1 + Level 2)						

2008 ELEMENTARY MEAP PROFICIENCY TARGET GOALS

As part of the *No Child Left Behind* Act of 2001, the Michigan Department of Education has established target goals of proficiency in English language arts and math for all Michigan children. These target goals will gradually increase to 100% by the year 2013-14. Students are considered *proficient* if they score at Level 1 or Level 2 on that portion of the MEAP tests.

	3rd Grade Target	Ashley 3rd Grade	4th Grade Target	Ashley 4th Grade
English Language Arts	60.0%	100.0%	59.0%	61.5%
Mathematics	67.0%	100.0%	65.0%	100.0%

Student Achievement Elementary Iowa Test Results

Once again, the Iowa Tests were administered to Ashley elementary students in grades 1 thru 4 in the Spring of 2009. This was done to give school planners another measure of student academic progress in addition to the *MEAP's*. These tests measure students' grade level abilities. Because these tests were administered in the spring, theoretically a second grader should score at 2.7 or above and a third grader should score at 3.7 or above, etc.

1st Grade Iowa Test Scores				
Year	Reading	Language	Math	Composite
2005	1.7	1.7	1.5	1.7
2006	1.7	1.9	1.7	1.8
2007	1.8	2	1.9	1.9
2008	1.8	1.9	1.9	1.9
2009	1.9	2.1	2.1	2
2nd Grade Iowa Test Scores				
Year	Reading	Language	Math	Composite
2005	3.1	3.1	2.8	3
2006	3	3	2.6	2.9
2007	2.9	3	3	2.9
2008	3.3	3.2	3.4	3.2
2009	3.4	3	3.2	3.1
3rd Grade Iowa Test Scores				
Year	Reading	Language	Math	Composite
2005	4	4.1	3.6	3.7
2006	4.1	4	3.8	4
2007	3.9	4.8	4.2	4.2
2008	3.6	4	4	3.8
2009	Not Tested	Not Tested	Not Tested	Not Tested
4th Grade Iowa Test Scores				
Year	Reading	Language	Math	Composite
2005	4.3	4.8	4.8	4.6
2006	4.9	5.2	5	4.9
2007	4.7	5.4	5	5
2008	4.9	5.1	5.1	5
2009	Not Tested	Not Tested	Not Tested	Not Tested

PARENT-TEACHER CONFERENCE ATTENDANCE: 2008-09

Fall – November 6, 2008			Spring – February 19, 2009		
Total	136/148	91.89%	Total	123/149	82.55%

PARENTAL INVOLVEMENT

- School/Parent Compact
- Parent classroom volunteers
- School improvement team
- P.T.O. meetings
- Elementary Fun Day
- night
- Grandparent's Day
- 1st grade Mother's Day Tea
- Elementary Newsletters
- Bear Cub Explorers
- Band Boosters/Sports Boosters
- P.T.O. activities
- Celebrate Reading Night
- 2nd grade Poetry/Song Night
- Kindergarten Celebration
- Student led conferences
- Title I parent meeting
- P.T.O. Open House
- Santa's Secret Shop
- MEAP Take the Test
- 2nd grade Dinosaur Night
- Band Concerts

ASHLEY SECONDARY SCHOOL

Principal Tommie D. Saylor, Jr.

MISSION STATEMENT

By motivating those involved in the educational process, we will actively engage in Ashley High School's scholastic, academic and community efforts to enhance the social, emotional, physical and intellectual well being of our students and community. Through communication and the learning process, we will encourage a healthy respect for the responsibilities involved in citizenship and develop the maximum potential of each individual.

PARENTAL INVOLVEMENT

- Band Boosters
- Concession workers
- Classroom career speakers
- Band Concerts
- Athletic Parent Nights
- Parent-Teacher Conferences
- Sports Boosters
- Volunteer tutors
- School Improvement Team
- Athletic event workers
- P.T.O. Open House
- Homecoming activities
- Trip chaperones
- Host families
- Citizen of the Month
- College Night
- Graduation
- Awards Banquet

5-12 MEAP / MME TESTING

High School MME Results						
Grade 9 Social Studies	2008-2009	%M	2007-2008	2006-2007	2005-2006	2004-2005
Level 1	29.6	Ashley	35.9	37.0	20.0	
Level 2	44.5	74.1	41.0	48.2	63.3	
Level 3	25.9	State Ave.	18.0	14.8	16.7	
Level 4	0.0	72	5.1	0.0	0.0	
Grade 11 - English Language Arts	2008-2009	%M	2007-2008	2006-2007	2005-2006	2004-2005
Level 1	0.0	Ashley	0.0	0.0	0.0	
Level 2	34.3	34.3	30.0	64.7	38.7	
Level 3	40.0	State Ave.	60.0	29.4	51.6	
Level 4	25.7	52	10.0	5.9	9.7	
Grade 11 - Mathematics	2008-2009	%M	2007-2008	2006-2007	2005-2006	2004-2005
Level 1	2.8	Ashley	0.0	11.8	0.0	0.0
Level 2	28.6	31.4	30.0	35.3	43.3	36.4
Level 3	14.3	State Ave.	25.0	17.6	16.7	9.1
Level 4	54.3	49	45.0	35.3	40.0	54.5
Grade 11 - Science	2008-2009	%M	2007-2008	2006-2007	2005-2006	2004-2005
Level 1	5.7	Ashley	0.0	5.9	0.0	9.1
Level 2	45.7	51.4	40.0	58.8	41.9	40.9
Level 3	14.3	State Ave.	45.0	5.9	48.4	18.2
Level 4	34.3	56	15.0	29.4	9.7	31.8
Grade 11 - Social Studies	2008-2009	%M	2007-2008	2006-2007	2005-2006	2004-2005
Level 1	31.4	Ashley	25.0	58.8	50.0	0.0
Level 2	40.0	71.4	55.0	41.2	40.0	13.6
Level 3	20.0	State Ave.	20.0	0.0	6.7	45.5
Level 4	8.6	81	0.0	0.0	3.3	40.9
%M = Percentage of students that either met or exceeded standards (Level 1 + Level 2)						

Middle School MEAP Results

Grade 5 - English Language Arts	2008-2009	%M	2007-2008	2006-2007	2005-2006	2004-2005
Level 1	4.2	Ashley	9.1	7.4	3.7	
Level 2	79.2	83.4	72.7	74.1	66.7	
Level 3	16.6	State Ave.	13.6	18.5	22.2	
Level 4	0.0	78	4.6	0.0	7.4	
Grade 5 Mathematics	2008-2009	%M	2007-2008	2006-2007	2005-2006	2004-2005
Level 1	12.5	Ashley	13.6	22.2	29.6	
Level 2	66.7	79.2	77.3	51.9	37.0	
Level 3	20.8	State Ave.	9.1	25.9	33.3	
Level 4	0.0	77	0.0	0.0	0.0	
Grade 5 - Science	2008-2009	%M	2007-2008	2006-2007	2005-2006	2004-2005
Level 1	33.3	Ashley	54.5	25.9	18.5	31.6
Level 2	54.2	87.5	45.5	66.7	51.9	68.4
Level 3	8.3	State Ave.	0.0	7.4	22.2	0.0
Level 4	4.2	83	0.0	0.0	7.1	0.0
Grade 6 - English Language Arts	2008-2009	%M	2007-2008	2006-2007	2005-2006	2004-2005
Level 1	9.1	Ashley	6.9	3.2	4.8	
Level 2	68.2	77.3	65.5	64.5	76.2	
Level 3	22.7	State Ave.	24.1	25.8	19.0	
Level 4	0.0	80	3.5	6.5	0.0	
Grade 6 Mathematics	2008-2009	%M	2007-2008	2006-2007	2005-2006	2004-2005
Level 1	45.5	Ashley	41.4	29.0	4.8	
Level 2	45.5	91.0	41.4	41.9	47.6	
Level 3	9.0	State Ave.	17.2	22.6	38.1	
Level 4	0.0	80	0.0	6.5	9.5	
Grade 6 Social Studies	2008-2009	%M	2007-2008	2006-2007	2005-2006	2004-2005
Level 1	38.1	Ashley	39.3	32.3	57.1	
Level 2	52.3	90.4	35.7	38.7	19.0	
Level 3	4.8	State Ave.	14.3	19.3	23.8	
Level 4	4.8	74	10.7	9.7	0.0	
Grade 7 - English Language Arts	2008-2009	%M	2007-2008	2006-2007	2005-2006	2004-2005
Level 1	0.0	Ashley	0.0	0.0	0.0	
Level 2	69.6	69.6	64.5	71.4	67.7	
Level 3	26.1	State Ave.	29.0	21.4	22.6	
Level 4	4.3	80	6.5	7.2	9.7	
Grade 7 Mathematics	2008-2009	%M	2007-2008	2006-2007	2005-2006	2004-2005
Level 1	63.6	Ashley	32.2	25.0	9.7	
Level 2	31.8	95.4	48.4	46.4	54.8	
Level 3	0.0	State Ave.	19.4	21.4	32.3	
Level 4	4.6	83	0.0	7.2	3.2	
Grade 8 - English Language Arts	2008-2009	%M	2007-2008	2006-2007	2005-2006	2004-2005
Level 1	6.9	Ashley	3.7	7.7	2.9	
Level 2	62.1	69.0	81.5	59.0	57.1	
Level 3	24.1	State Ave.	14.8	25.6	34.3	
Level 4	6.9	77	0.0	7.7	5.7	
Grade 8 - Mathematics	2008-2009	%M	2007-2008	2006-2007	2005-2006	2004-2005
Level 1	34.5	Ashley	33.3	5.1	38.2	28.6
Level 2	48.3	82.8	33.3	56.4	26.5	42.9
Level 3	13.8	State Ave.	25.9	30.8	29.4	21.4
Level 4	3.4	75	7.5	7.7	5.9	7.1
Grade 8 - Science	2008-2009	%M	2007-2008	2006-2007	2005-2006	2004-2005
Level 1	23.3	Ashley	32.1	28.2	47.1	11.5
Level 2	56.7	80.0	42.9	48.7	35.3	65.4
Level 3	20.0	State Ave.	25.0	18.0	17.6	15.4
Level 4	0.0	76	0.0	5.1	0.0	7.7

%M = Percentage of students that either met or exceeded standards (Level 1 + Level 2)

Secondary MEAP Proficiency Target Goals

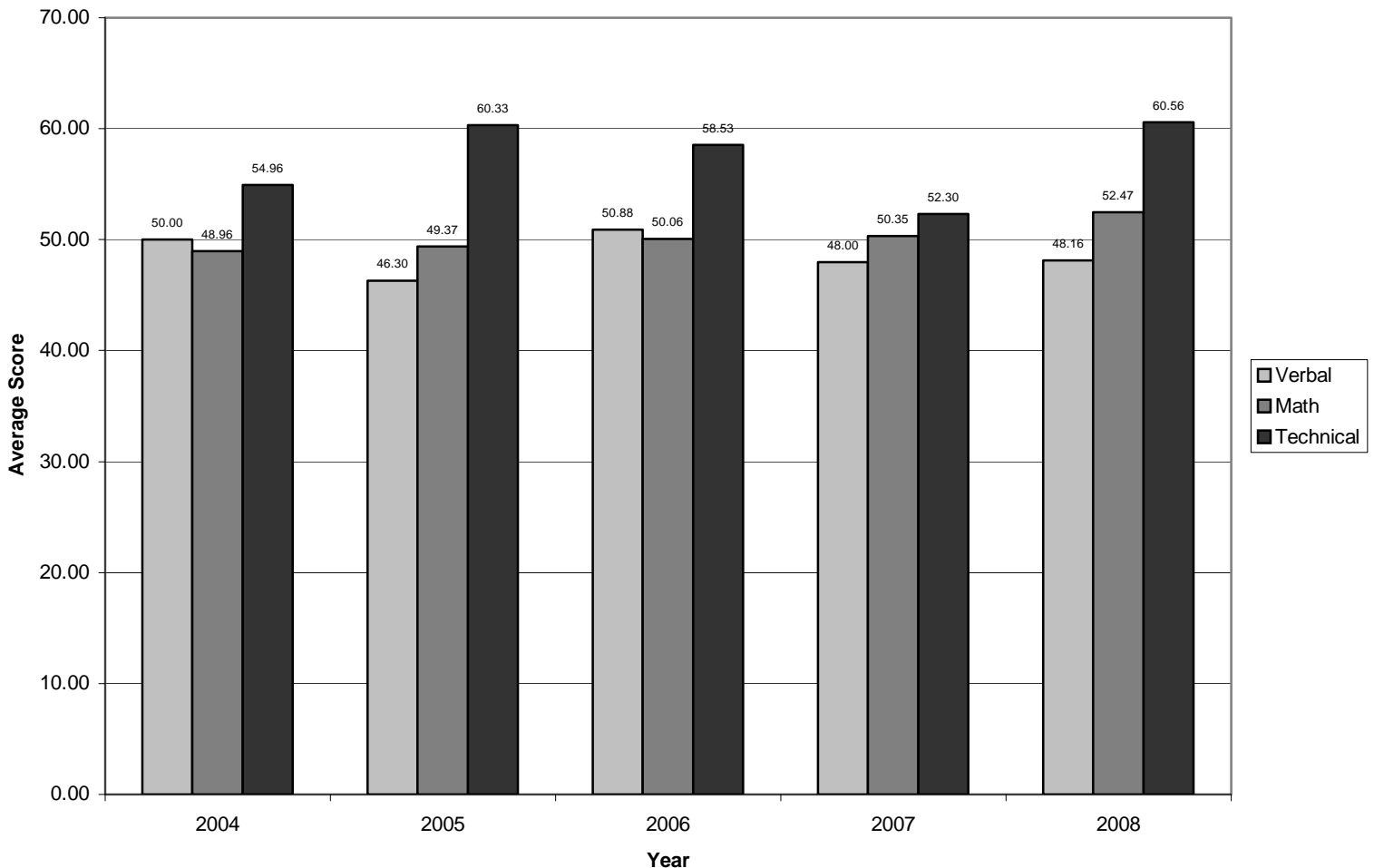
As part of the *No Child Left Behind Act* of 2001, the Michigan Department of Education has established target goals of proficiency in English language arts and math for all Michigan children. These target goals will gradually increase to 100% by the year 2013-14. Students are considered *proficient* if they score Level 1 or Level 2 on that portion of the MEAP tests.

	English Language Arts	Mathematics
5th Target Scores	57.0%	62.0%
Ashley 5th Grade	83.4%	79.2%
6th Target Scores	56.0%	60.0%
Ashley 6th Grade	77.3%	91.0%
7th Target Scores	54.0%	57.0%
Ashley 7th Grade	69.6%	95.4%
8th Target Scores	53.0%	54.0%
Ashley 8th Grade	69.0%	82.8%
11th Target Scores	61.0%	55.0%
Ashley 11th Grade	34.3%	31.4%

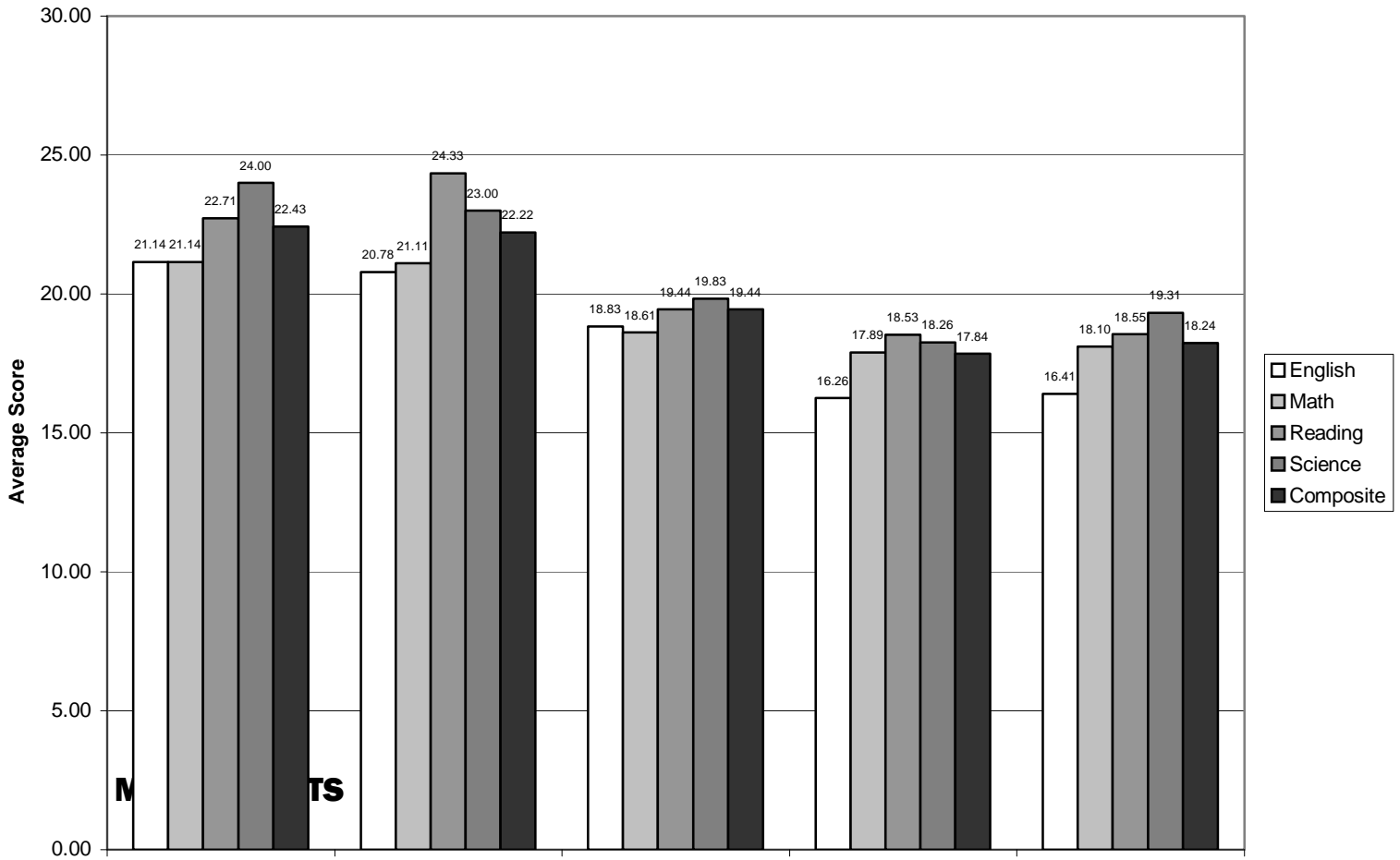
Student Achievement

ASVAB and ACT Test Results

ASVAB Results



ACT Results



Students in grades 11 and 12 take a battery of tests in core academic subjects known as the *Michigan Merit Exam (MME)*. These tests are the high school equivalent of the *MEAP* tests taken by elementary and middle school students. Subjects tested include Math, Science, English Language Arts, and Social Studies. Students qualify for a \$4,000 *Michigan Merit Scholarship* by scoring a 1 or 2 in all four subject areas of reading, writing, math, and science. Students can also qualify by scoring a 1 or 2 in two of the four subject areas plus being in the 75th percentile or higher on the *ACT* (score 24 or higher).

ACT RESULTS

Junior and senior students also take a college readiness test called the *American College Test (ACT)*. This test measures student's abilities in core academic subject matter and is a good indicator of potential to do well in college. A composite score of 20 or better is a good indicator the student can be successful in college.

PARENT-TEACHER CONFERENCE ATTENDANCE: 2008-09

Fall – November 6, 2008		Spring – February 19, 2009	
Total:	127/228 55.70%	Total:	102/225 45.33%

DROP OUT RATE

The drop out rate is determined by a cohort group. Each individual entering 9th grade must graduate within four years, or be considered “off track”. Along with students that drop out of school, off track students count against the school’s graduation rate. Though some students may transfer to another school, may be court placed elsewhere, may move out of district, or may have moved into district, this still counts toward our graduation rate as defined above.

Class/Year	Number of Students Start of 9th Grade	Number of Students On Track	Number of Students Off Track	Graduation Rate (%)
Class of 2006	21	21	0	100.0%
Class of 2007	39	36	3	92.3%
Class of 2008	28	26	2	92.9%
Class of 2009	36	29	7	80.6%
Totals	124	112	12	90.3%

PROFESSIONAL QUALIFICATIONS OF TEACHERS AND STAFF

As parents, you have a right to know the qualifications of the teachers that teach your children. Specific information on the experience, certification, and other qualifications of individual teachers is available through the office of the principal at 989-847-2514 or from the central office at 989-847-4000.

ASHLEY DISTRICT TECHNOLOGY

Technology Vision Statement

We will incorporate effective technology/media applications to increase productivity and transform both our operations and instructional programs K-12.

Long Range Technology Goals

1. Blend the K-12 curriculum and technology with school improvement.
2. Continuously train all staff to use technology.
3. Teach students to use technology for life-long learning.
4. Encourage cooperation and teamwork.
5. Teachers and students will use technology in the areas of instruction, classroom management, and communications.
6. Teachers will develop classrooms that reflect the use of an integrated decision making process.
7. Teachers will establish a position of leadership in preparing students to enter a “work force of the future”.
8. To continue to strive and prosper in the computer technology age.

Curriculum Integration

All classrooms K-12 at Ashley Community Schools have at least two computers with at least one of those machines connected to the network. Any student at Ashley is entitled to receive an Ashleyschools.net e-mail account and is encouraged to get *online* at home if they have access to a personal computer. The number of students making use of this service increases as they advance into higher grades.

Technology Communications and Public Relations

Communication with the community is an important aspect of our school-community relationship. Monthly district newsletters are sent home with students and distributed throughout the district. In addition, elementary and secondary newsletters are regularly sent home. The journalism class publishes the *Spotlight*, a school newspaper. Our district offers its own home page on the World Wide Web at www.Ashleyschools.net

In 1998, the Ashley Library became the Ashley District Library with expanded after school, evening, summer, and weekend hours for community use. District residents can check out a book or video, use the computers for research or to surf the internet, or relax and enjoy a good book in air conditioned comfort.

Our goal is to keep the community informed of all school events, allow them to participate in areas of interest, and to make them an important part of the decision making process.

EMERGENCY PLANNING

CRISIS TEAM

Purpose: To help plan support activities when a crisis situation occurs.

The Crisis Team may be called to action for the following reasons:

1. Death of a student or staff member
2. Act of violence during school hours
3. Multi student accident
4. Serious injury to student or staff member
5. Fire
6. Natural disaster
7. Traumatic community, state, or national event
8. Any event that negatively impacts the school population

EMERGENCY RESPONSE TO CRISIS SITUATION

In response to incidents of school violence that have happened around the country, the following actions have been developed by school administrators at Ashley Community Schools to deal with crisis situations:

1. Crisis response boxes in each office and one at a remote location
2. Crisis emergency information shared with County Sheriff and State Police
3. School emergency evacuation sites established
4. School emergency evacuation procedures developed
5. Classroom and teacher notification procedures of lockdown and evacuation developed
6. School crisis team designated and procedures established
7. County wide crisis response plans in development
8. Anti bullying policy adopted by Board of Education and now in student handbook
9. School personnel assigned responsibilities for crisis situations
10. Administrators attend county wide safety council meetings to learn how to effectively deal with crisis situations.